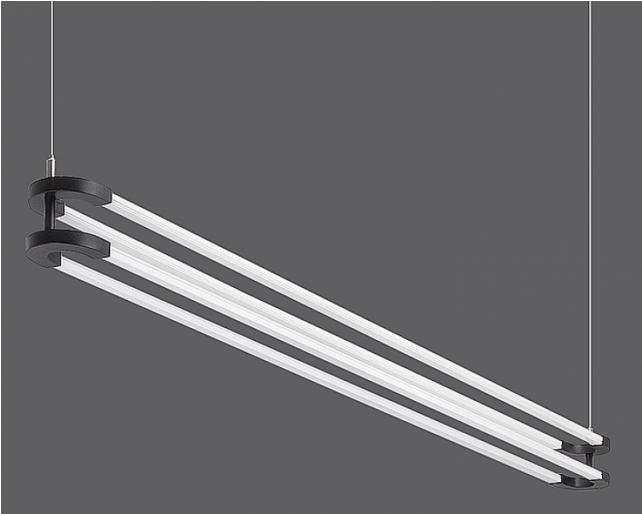


U-Line

Indoor Lighting - Suspended



TECHNICAL INFORMATION

Housing	Extruded aluminum profile housing & metal end caps
Optics	UV-stabilized opal diffuser
LED Lifetime	50.000 hours
Mounting System	Pendant

OPTICAL SPECIFICATIONS

Optical	Direct&Indirect
Light Exit Angle	140°
UGR Value	80

ELECTRICAL

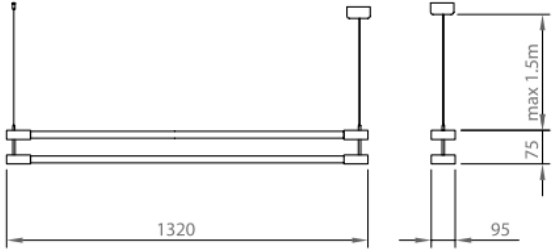
Power (W)	72W
Power Factor	>95
Light Source	SMD Mid Power LED
Cabling	Halogen-Free
Input Voltage	220-240V / 50-60 Hz

OPTIONAL

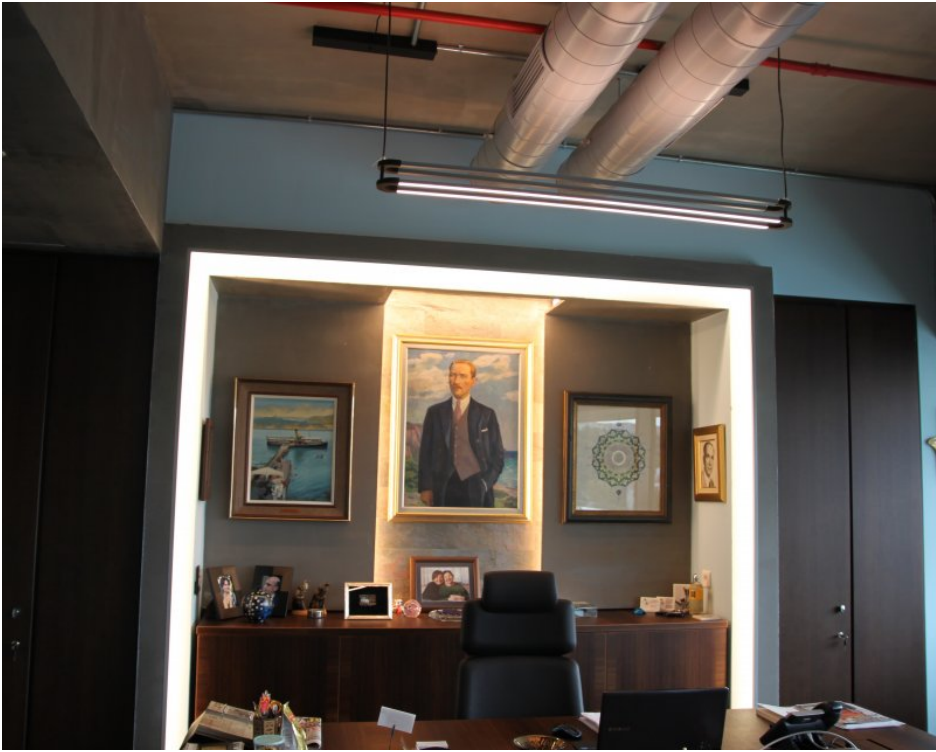
DALI

MOUNTING

Mounting Type Pendant



Order Code	W	Light Source	Lm	CCT	WxLxH (mm)	Kg
01136.13.30.070	72	LED Module	7000	3000	95x1320x75	2.8
01136.13.40.072	72	LED Module	7200	4000	95x1320x75	2.8



All electrical values given are nominal values. The luminous flux and the associated electrical load are subject to an initial tolerance of +/- 10%. Color temperature tolerance: +/-150 K. Unless otherwise stated, values are valid for an ambient temperature of 25°C.
The information containing technical parameters and product codes in the catalog and on the website may differ from standard products due to customizations made according to projects.
Ikizler Aydınlatma has the right to make changes to the products without notice. You can get up-to-date information about the products on our website.

Phone: +90 (216) 397 22 16
Fax: +90 (216) 397 19 19
E-Mail: info@ikizleraydinlatma.com

Please visit our website for our updated information. www.ikizleraydinlatma.com

