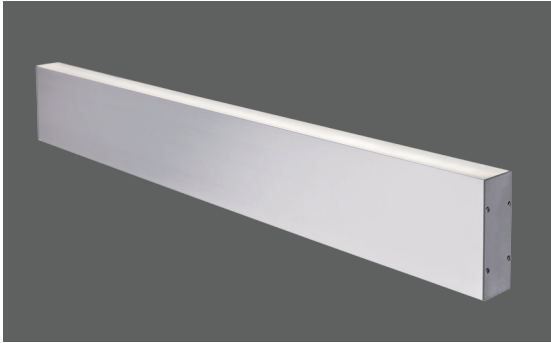
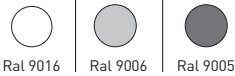


# COMET



## Standard Colours



## OPTICAL

Up&Down light distribution  
 Beam angle 120°  
 UGR <22  
 Lifetime (L90/B10): 50000 h.(tq+25°C)  
 Lifetime (L80/B20): 100000 h. (tq+25°C)  
 SMD LED module  
 Color rendering index: CRI>80  
 MacAdams SDCM 3

## MECHANICAL

Extruded aluminium profile housing  
 UV stabilized opal diffuser  
 IP40 protection degree  
 Impact resistance IK02  
 Glow-wire test resistance 650°C

## ELECTRICAL

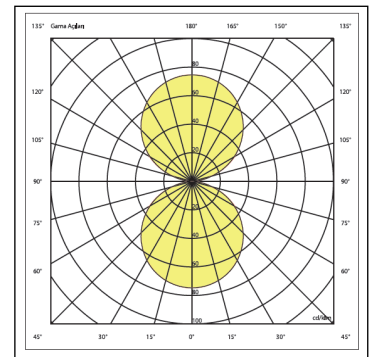
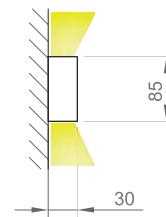
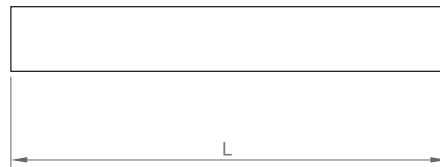
Halogen-free wiring  
 220-240V-50/60Hz  
 Power factor >0.95  
 Constant current, Class I, isolated driver  
 CE - IEC 60598-1 - EN 60598-1  
 Ambient temperature from -20°C to +50°C  
 On-Off Control - (Code: .N000)

## OPTIONAL

DALI - (Code: .DXXX)  
 1-10V - (Code: .MXXX)  
 Flicker-free - (Code: .FXXX)  
 Emergency battery - (Code .X3HT)  
 CBS connection  
 Color temperature (K) options  
 RAL colour selection

## INSTALLATION

Wall surface mounted.



Product Code	Power (W)	Lumen (lm)	CCT (K)	CRI	Dimensions WxLxH (mm)	Cut-Out Q (mm)	Weight (kg)
06600.60.30.017	2x10	1700	3000K	Ra>80	30x605x85	N/A	0,8

All electrical values given are rated values. Luminous flux and connected electrical load are subject to an initial tolerance of +/- 10%. Tolerance of colour temperature: +/-150 K. Unless stated otherwise, the values apply to an ambient temperature of 25°C.

Any information including technical parameters and product codes may differ from standard products in catalogue & web site due to customization made per projects.

Ikizler Lighting has the right to make changes or cancellations on the products without notification. Updated information on the products can be received from our web site.