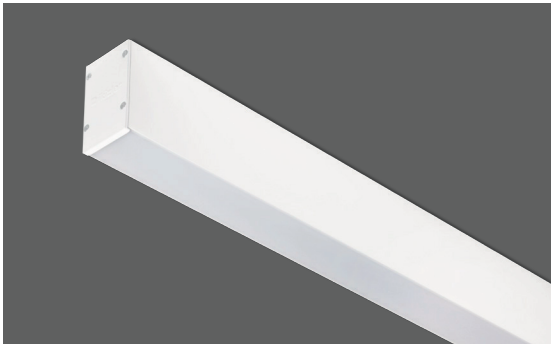


# LIGHTLINE-045



## Standard Colours



Ral 9016

Ral 9006

Ral 9005



## OPTICAL

Direct symmetric distribution  
Beam angle 120°  
UGR <22  
Luminous efficacy >100 lm/W  
Lifetime (L90/B10): 50000 h.(tq+25°C)  
Lifetime (L80/B20): 100000 h. (tq+25°C)  
SMD LED module  
Color rendering index: CRI>80  
MacAdams SDCM 3

## MECHANICAL

Extruded aluminium profile housing  
UV stabilized opal polycarbonate diffuser  
IP40 protection degree  
Impact resistance IK08  
Glow-wire test resistance 650°C

## ELECTRICAL

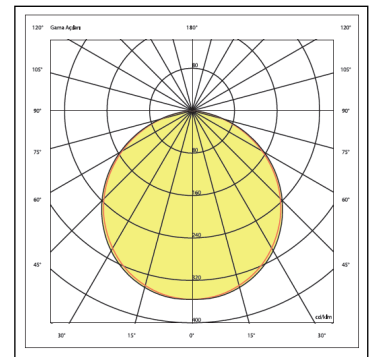
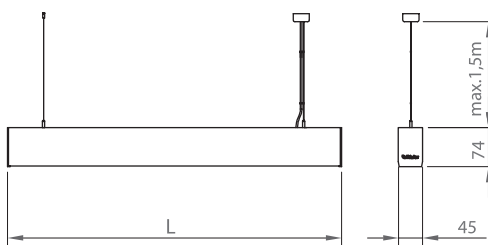
Halogen-free wiring  
220-240V-50/60Hz  
Power factor >0.95  
Constant current, Class I, isolated driver  
CE - IEC 60598-1 - EN 60598-1  
Ambient temperature from -20°C to +50°C  
On-Off Control - (Code: .N000)

## OPTIONAL

DALI - (Code: .DXXX)  
1-10V - (Code: .MXXX)  
Tunable White  
Flicker-free - (Code: .FXXX)  
Emergency battery - (Code .X3HT)  
CBS connection  
Sensor applications  
Color rendering index: CRI >90  
Color temperature (K) options  
Linear installation for custom lengths  
Through-wiring  
RAL colour selection  
Suspension kit

## INSTALLATION

Ceiling surface or suspended mounted.



Product Code	Power (W)	Lumen (lm)	CCT (K)	CRI	Dimensions WxLxH (mm)	Cut-Out Q (mm)	Weight (kg)
01180.47.40.016	15	1600	4000K	Ra>80	45x575x74	N/A	1,8

All electrical values given are rated values. Luminous flux and connected electrical load are subject to an initial tolerance of +/- 10%. Tolerance of colour temperature: +/-150 K. Unless stated otherwise, the values apply to an ambient temperature of 25°C.

Any information including technical parameters and product codes may differ from standard products in catalogue & web site due to customization made per projects.

Ikizler Lighting has the right to make changes or cancellations on the products without notification. Updated information on the products can be received from our web site.