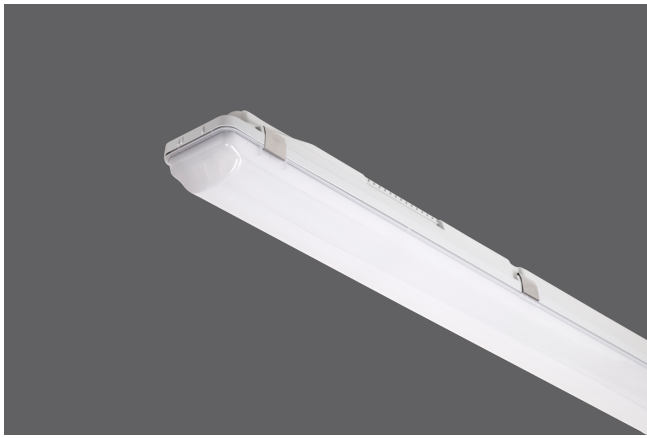


# PROOF



## OPTICAL

Direct symmetric distribution  
 Beam angle 120°  
 UGR <22  
 Luminous efficacy >100 lm/W  
 Lifetime (L90/B10): 50000 h.(tq+25°C)  
 Lifetime (L80/B20): 100000 h. (tq+25°C)  
 SMD LED module  
 Color rendering index: CRI>80  
 MacAdams SDCM 3

## MECHANICAL

Polycarbonate housing  
 Opal polycarbonate diffuser  
 Stainless steel clips  
 White steel reflector  
 IP66 protection degree  
 Impact resistance IK08  
 Glow-wire test resistance 650°C

## ELECTRICAL

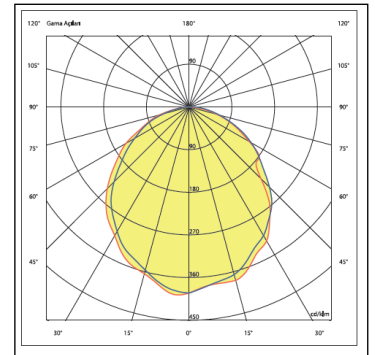
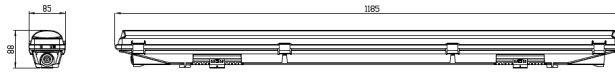
Halogen-free wiring  
 220-240V-50/60Hz  
 Power factor >0.95  
 Constant current, Class I, isolated driver  
 CE - IEC 60598-1 - EN 60598-1  
 Ambient temperature from -20°C to +50°C  
 On-Off Control - (Code: .N000)

## OPTIONAL

DALI - (Code: .DXXX)  
 1-10V - (Code: .MXXX)  
 Tunable White  
 Flicker-free - (Code: .FXXX)  
 Emergency battery - (Code .X3HT)  
 CBS connection  
 Sensor applications  
 Color rendering index: CRI >90  
 Color temperature (K) options  
 Through-wiring  
 Suspension kit

## INSTALLATION

Surface or suspended mounted.



Product Code	Power (W)	Lumen (lm)	CCT (K)	CRI	Dimensions WxLxH (mm)	Cut-Out Q (mm)	Weight (kg)
07101.14.40.036	32	3600	4000K	Ra>80	85x1185x88	N/A	1,6

All electrical values given are rated values. Luminous flux and connected electrical load are subject to an initial tolerance of +/- 10%. Tolerance of colour temperature: +/-150 K. Unless stated otherwise, the values apply to an ambient temperature of 25°C.

Any information including technical parameters and product codes may differ from standard products in catalogue & web site due to customization made per projects.

Ikizler Lighting has the right to make changes or cancellations on the products without notification. Updated information on the products can be received from our web site.