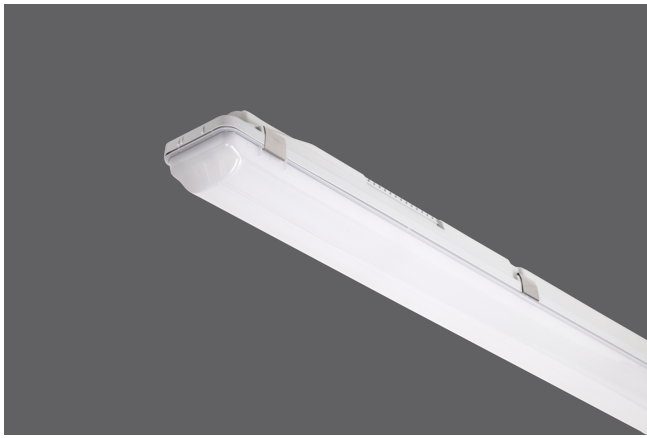


# PROOF



## OPTICAL

Direct symmetric distribution  
Beam angle 120°  
UGR <22  
Luminous efficacy >100 lm/W  
Lifetime (L90/B10): 50000 h.(tq+25°C)  
Lifetime (L80/B20): 100000 h. (tq+25°C)  
SMD LED module  
Color rendering index: CRI>80  
MacAdams SDCM 3

## MECHANICAL

Polycarbonate housing  
Opal polycarbonate diffuser  
Stainless steel clips  
White steel reflector  
IP66 protection degree  
Impact resistance IK08  
Glow-wire test resistance 650°C

## ELECTRICAL

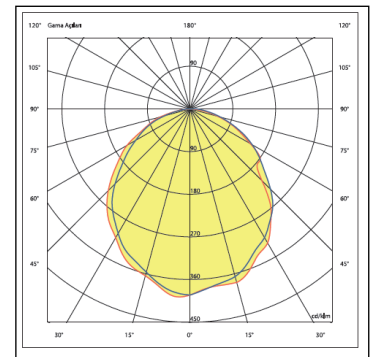
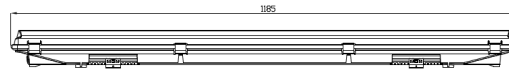
Halogen-free wiring  
220-240V-50/60Hz  
Power factor >0.95  
Constant current, Class I, isolated driver  
CE - IEC 60598-1 - EN 60598-1  
Ambient temperature from -20°C to +50°C  
On-Off Control - (Code: .N000)

## OPTIONAL

DALI - (Code: .DXXX)  
1-10V - (Code: .MXXX)  
Tunable White  
Flicker-free - (Code: .FXXX)  
Emergency battery - (Code .X3HT)  
CBS connection  
Sensor applications  
Color rendering index: CRI >90  
Color temperature (K) options  
Through-wiring  
Suspension kit

## INSTALLATION

Surface or suspended mounted.



Product Code	Power (W)	Lumen (lm)	CCT (K)	CRI	Dimensions WxLxH (mm)	Cut-Out Q (mm)	Weight (kg)
07101.14.40.049	47	4900	4000K	Ra>80	85x1185x88	N/A	1,6

All electrical values given are rated values. Luminous flux and connected electrical load are subject to an initial tolerance of +/- 10%. Tolerance of colour temperature: +/-150 K. Unless stated otherwise, the values apply to an ambient temperature of 25°C.

Any information including technical parameters and product codes may differ from standard products in catalogue & web site due to customization made per projects.

Ikizler Lighting has the right to make changes or cancellations on the products without notification. Updated information on the products can be received from our web site.